



RB 2000 BARRIER INSTALLATION GUIDE

Robust, heavy duty and versatile, the RB2000 barriers are manufactured from prime polythene for ease of transportation and movement.

People to Install:



Equipment / Accessories Needed:

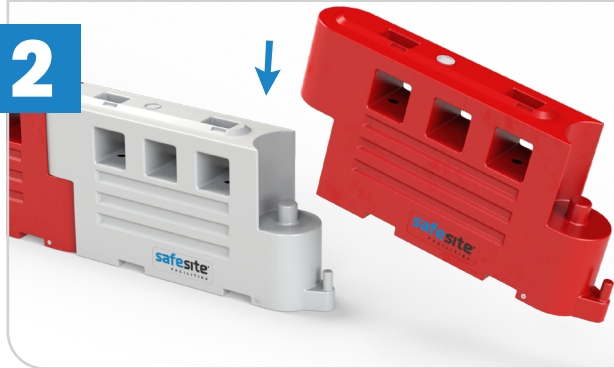
No accessories or tools required.

1



The barrier is specifically designed to be placed on uneven surfaces.

2



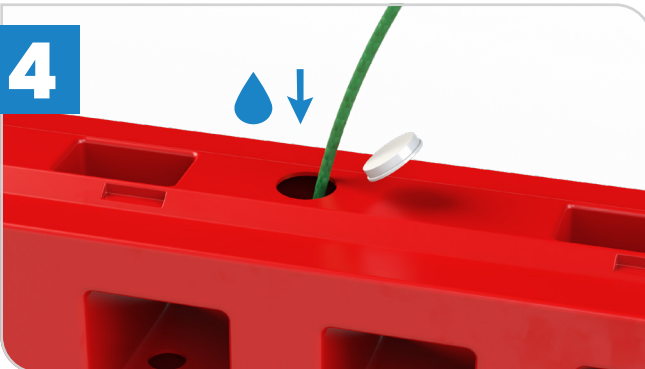
Place the double protruding connector pins into the corresponding holes on the second barrier to ensure the two barriers are locked together.

3



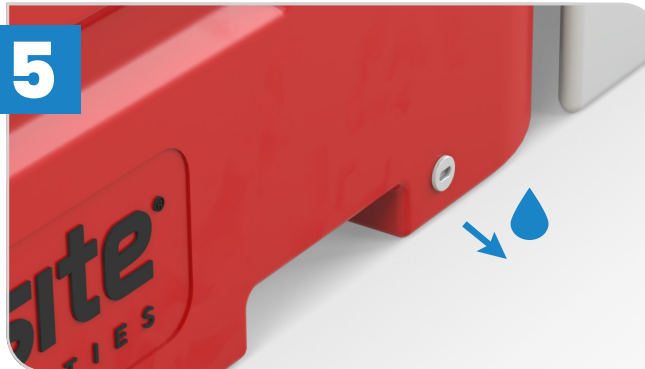
Repeat this process as many times as you need.

4



Once you are happy with your chain of barriers, you can then fill the RB2000 barrier with water. To do this, remove the cap on the flat top of the barrier and pour in.

5



To release the water, remove the plug at the bottom of the barrier and allow the water to drain out.



Useful Tip: Remember to fill the barriers before adding the mesh fence, as the panel will sit over the top of the fill hole and obstruct access.



Wear the appropriate PPE for this task.



RB 2000 BARRIER – MESH OR HOARDING PANEL INSTALLATION GUIDE

The RB2000 can be fused in conjunction with many of our other products including hoarding, mesh panels, vehicle and pedestrian gates.

People to Install:



Equipment / Accessories Needed:

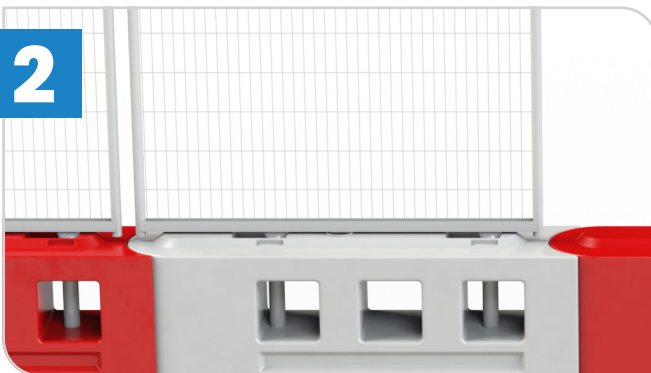
- Large couplers

1



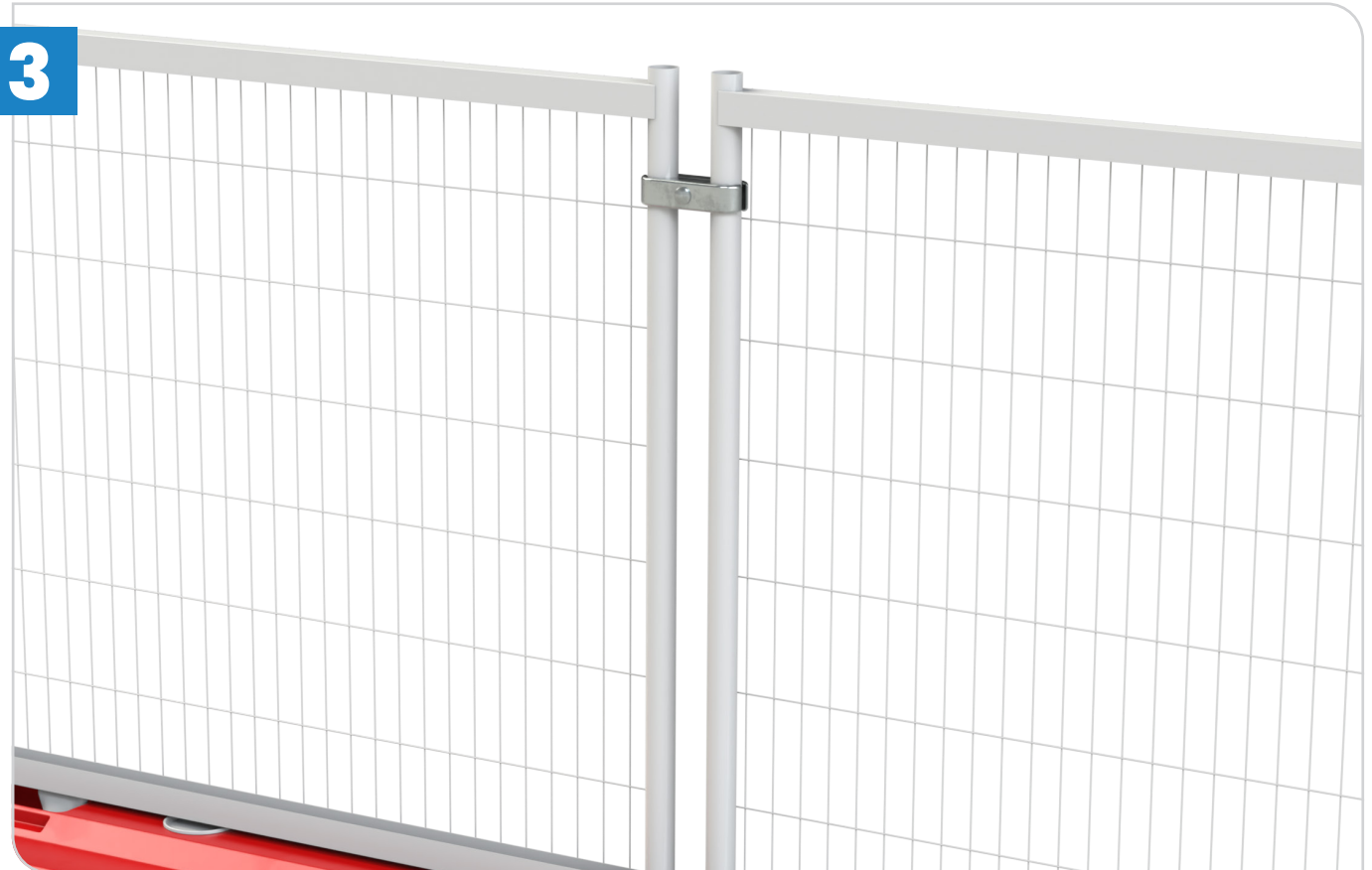
To attach the mesh panels, hold the panels above the barrier and line up the poles with both holes which you can see from the top of the barrier.

2



Insert the poles into both holes, and push the panel down to secure in position.

3



Couplers should then be fixed to the top section of the mesh fence panel.



Useful Tip: Remember to fill the barriers before adding the mesh fence, as the panel will sit over the top of the fill hole and obstruct access.



Wear the appropriate PPE for this task. 02



RB 2000 BARRIER – GATES INSTALLATION GUIDE

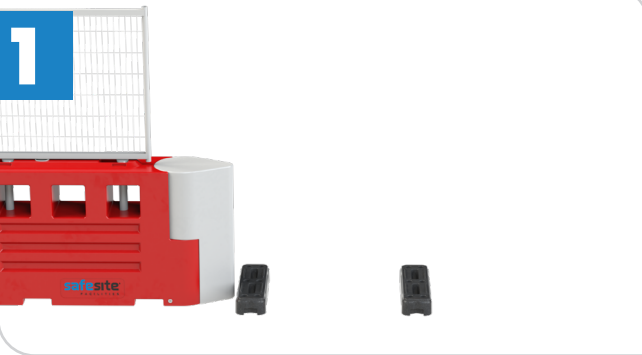
It is a common requirement for sites to provide vehicular access – the RB2000 barrier can adhere to this need with a compatible vehicle gate. To attach this to the barrier, do the following:

People to Install:



Equipment / Accessories Needed:

- Large & HD couplers



Place the rubber fence feet on the ground next to the RB2000 barriers. The distance between the feet should be similar to the size of the gate you're adding.



Attach the small adapt panel/flag to the mesh or hoarding panel on the barrier using a coupler.



Insert an adaption post into the feet you've placed on the floor next to the opening.



Attach the adaption pole to the adaption panel using 2 couplers (one at the top and bottom section).



If installing an unframed pedestrian gate, you need to attach an adaption pole to one side of the opening, and a slam post to the other. This is attached to the flag/adaption panel in the same way as the adaption post.



Use couplers (2) to attach the top and bottom section of gate to the adaption post. The coupler needs to be placed on the swivel joints.



Useful Tip: The framed pedestrian gate offers a simpler alternative to standard gates as adaption posts are not required. The installation is very similar, the frame is attached to the barrier/mesh system using couplers and the frame sits in rubber feet.



Wear the appropriate PPE for this task. 03